



Burdett Road, London, E3

BUTLER & STAG



Top floor studio apartment with a balcony and a rear terrace, close to Mile End underground station.



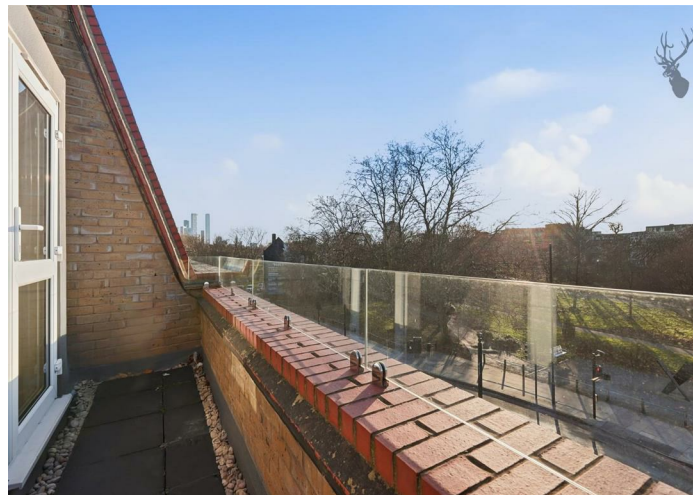
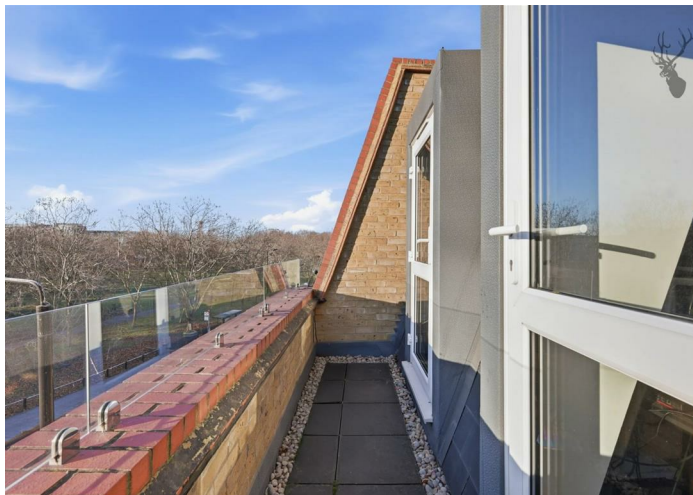
- Smart Studio Apartment
- Balcony with City Views
- Mile End Location
- Furnished
- Two Private Outdoor Spaces!
- Rear Terrace
- Spacious Bathroom
- Available from 16th January 2026

This smartly presented studio features a bright living space/kitchen/bedroom which leads out to a private west-facing balcony with views towards the city skyline and over the green spaces of Mile End Park. The spacious bathroom also has direct access out to a private terrace, a perfect spot for relaxing and for al fresco dining in the warmer months.

The location is a very convenient one, placing you next to Mile End Park and various local amenities, while Mile End underground station is only a short distance away, providing swift and easy access across the capital. Queen Mary University is also just moments away.

Offered furnished and available from 16th January 2026.

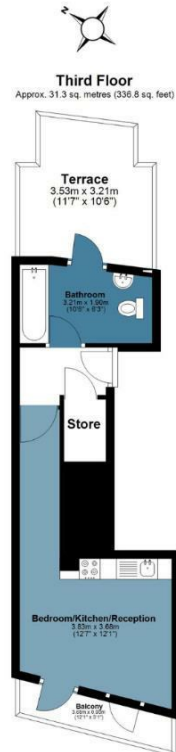
EPC Rating B
Council Tax Band A





Driss Apartments

Approx. Gross Internal Area 31.3 sq. metres (336.8 sq. feet)



Measurements are approximate and for illustration purposes only. While we do not doubt the accuracy and completeness, we advise you conduct a careful independent assessment of the property to determine monetary value
© @modephoto.uk www.modephoto.co.uk

BUTLER & STAG

BUTLER & STAG

☎ 020 8102 1236

🏠 508 Roman Road, Bow, London, E3 5LU

✉ bow@butlerandstag.com

www.butlerandstag.uk

IMPORTANT NOTICE - These particulars have been prepared in good faith and they are not intended to constitute part of an offer or contract. We have not performed a structural survey on this property and the services, appliances and specific fittings have not been tested. All photographs, measurements, floor plans and distances referred to are given as a guide and should not be relied upon.